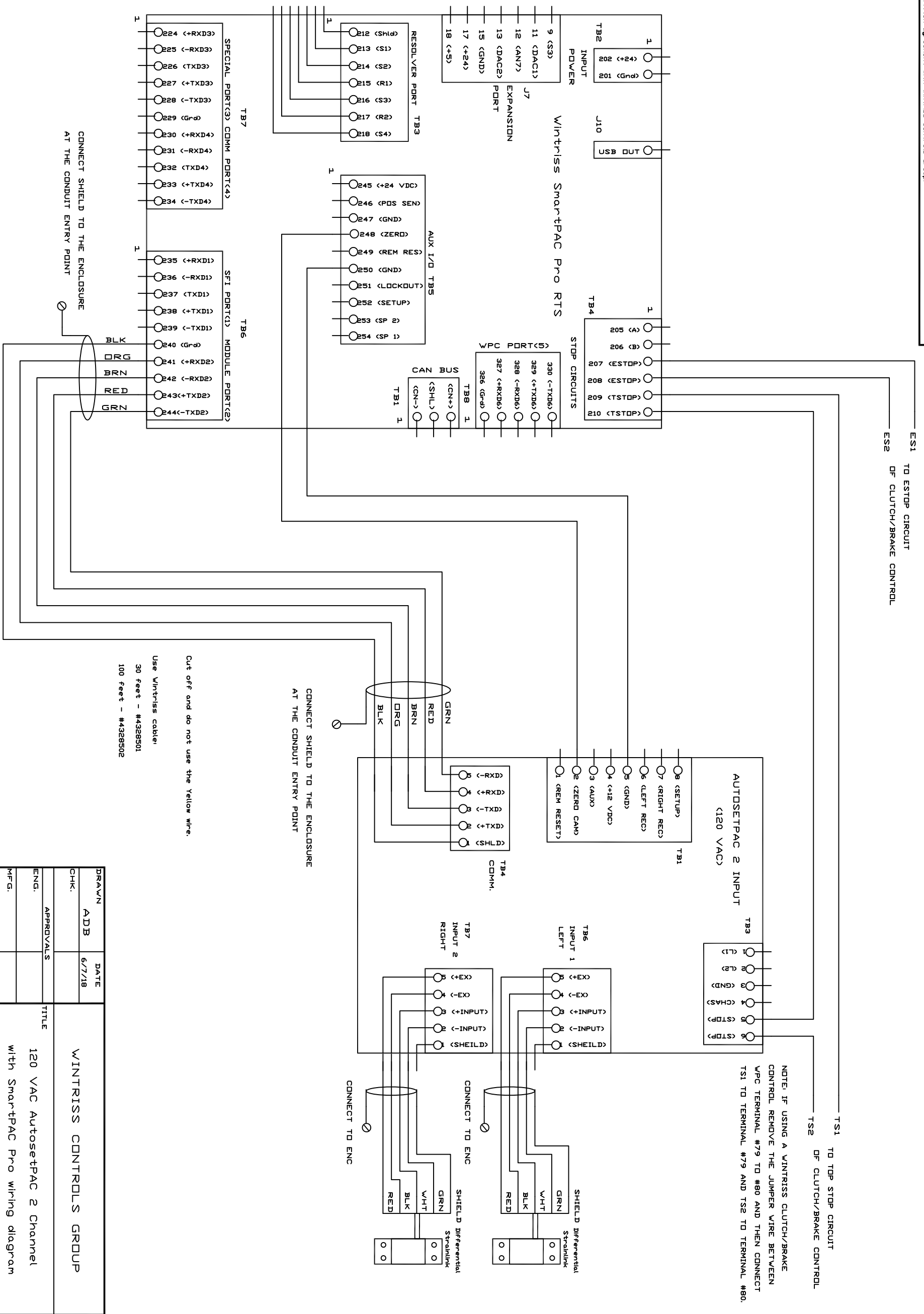


PROPRIETARY RIGHTS. This document discloses subject matter in which Wintriss Controls Group has proprietary rights. Neither receipt nor possession thereof confers or transfers any right to reproduce or disclose the document, any part thereof, any information contained therein or any physical article or device, or to practice any method or process, except by written permission or written agreements with Wintriss Controls Group.

REVISIONS		
REV	DESCRIPTION	DATE



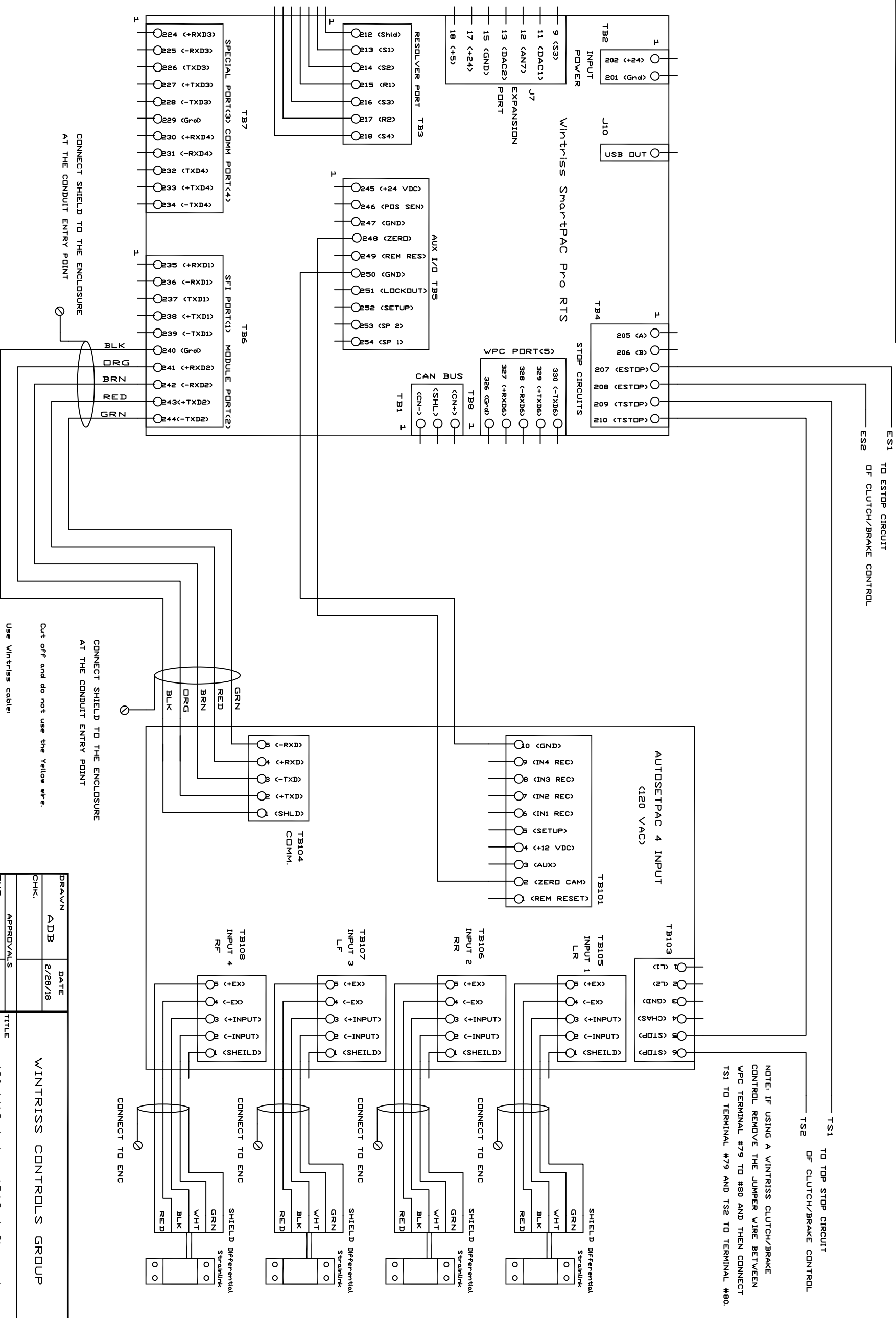
Cut off and do not use the yellow wire.
 Use Wintriss cable!
 30 feet - #4328501
 100 feet - #4328502

NOTE: IF USING A WINTRISS CLUTCH/BRAKE CONTROL REMOVE THE JUMPER WIRE BETWEEN VPC TERMINAL #79 TO #80 AND THEN CONNECT TSI TO TERMINAL #79 AND TS2 TO TERMINAL #80.

DRAWN	ADD	DATE	6/7/18
CHK:			
APPROVALS			
ENG.		TITLE	
MFG.		120 VAC Autosetpac 2 Channel	
REL		with SmartPAC Pro wiring diagram	
		CODE IDENT. NO.	
		SIZE	C
		DRAWING NUMBER	FIGURE 1
		SCALE	
		SHEET	OF

PROPRIETARY RIGHTS. This document discloses subject matter in which Wintriss Controls Group has proprietary rights. Neither receipt nor possession thereof confers or transfers any right to reproduce or disclose the document, any part thereof, any information contained therein or any physical article or device, or to practice any method or process, except by written permission or written agreements with Wintriss Controls Group.

REV	DESCRIPTION	DATE	APP'D



CONNECT SHIELD TO THE ENCLOSURE AT THE CONDUIT ENTRY POINT

CONNECT SHIELD TO THE ENCLOSURE AT THE CONDUIT ENTRY POINT

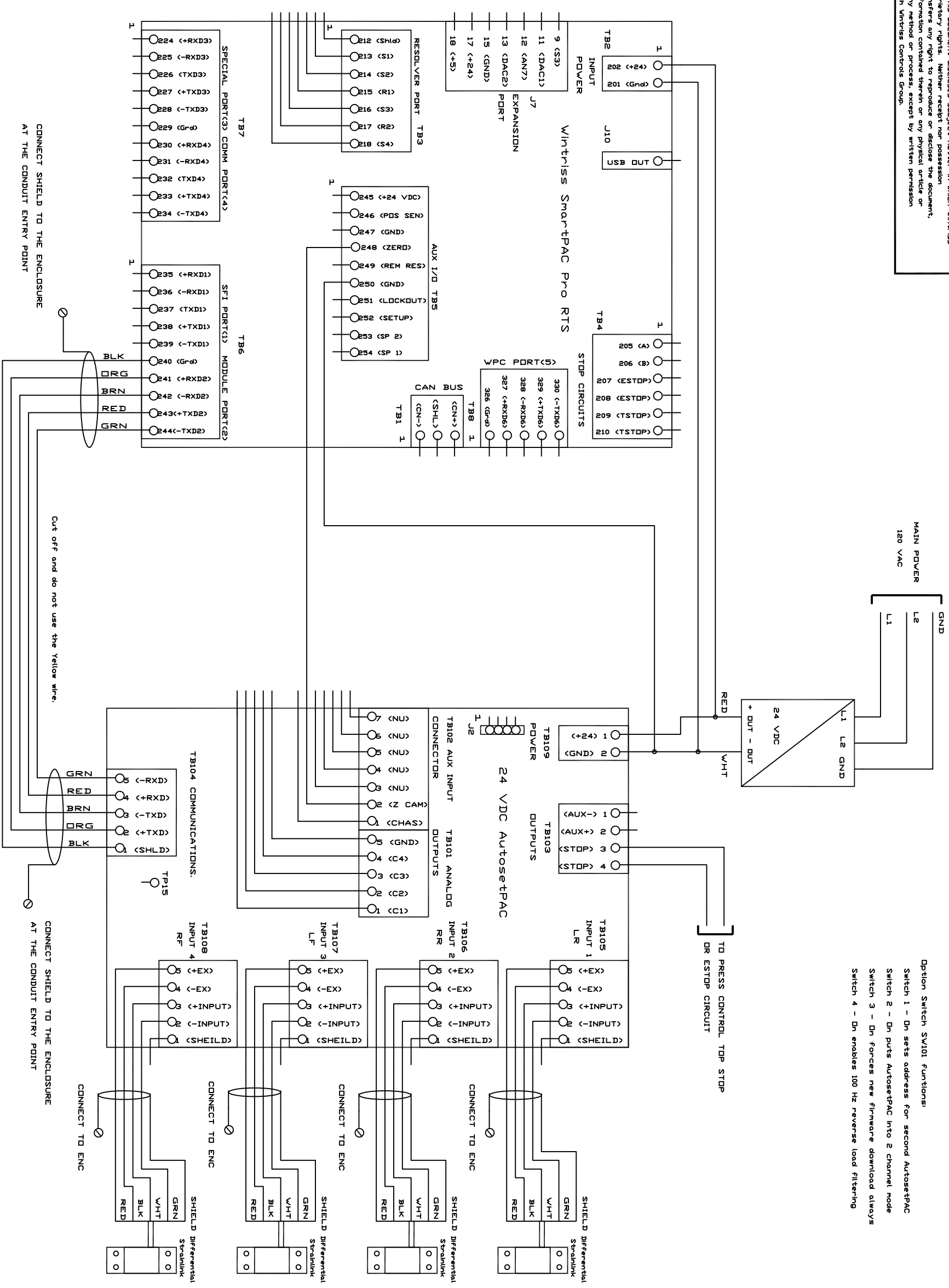
CONNECT TO ENC

NOTE: IF USING A WINTRISS CLUTCH/BRAKE CONTROL REMOVE THE JUMPER WIRE BETWEEN WPC TERMINAL #79 TO #80 AND THEN CONNECT TSI TO TERMINAL #79 AND TS2 TO TERMINAL #80.

Use Wintriss cable:
30 feet - #4328501
100 feet - #4328502

DRAWN		DATE		TITLE
ADB		2/28/18		
CHK:		APPROVALS		CODE IDENT NO.
ENG.		FILENAME		SIZE
MFG.		REL		SCALE
REL		SHEET		OF

PROPRIETARY RIGHTS. This document discloses subject matter in which Wintriss Controls Group has proprietary rights. Neither receipt nor possession thereof confers or transfers any right to reproduce or disclose the document, any part thereof, any information contained therein or any physical article or device, or to practice any method or process, except by written permission or written agreement with Wintriss Controls Group.



Use Wintriss cable!
 30 feet - #4328501
 100 feet - #4328502

DRAWN	ADB	DATE	2/28/18	TITLE	WINTRISS CONTROLS GROUP
CHK.		APPROVALS		24 VDC AutoseTPAC 4 Channel	
ENG.				With SmartPAC Pro wiring diagram	
MFG.				CODE IDENT. NO.	SIZE
REL.				FILENAME	DRAWING NUMBER
				REL	FIGURE 4
				SCALE	SHEET
					OF

