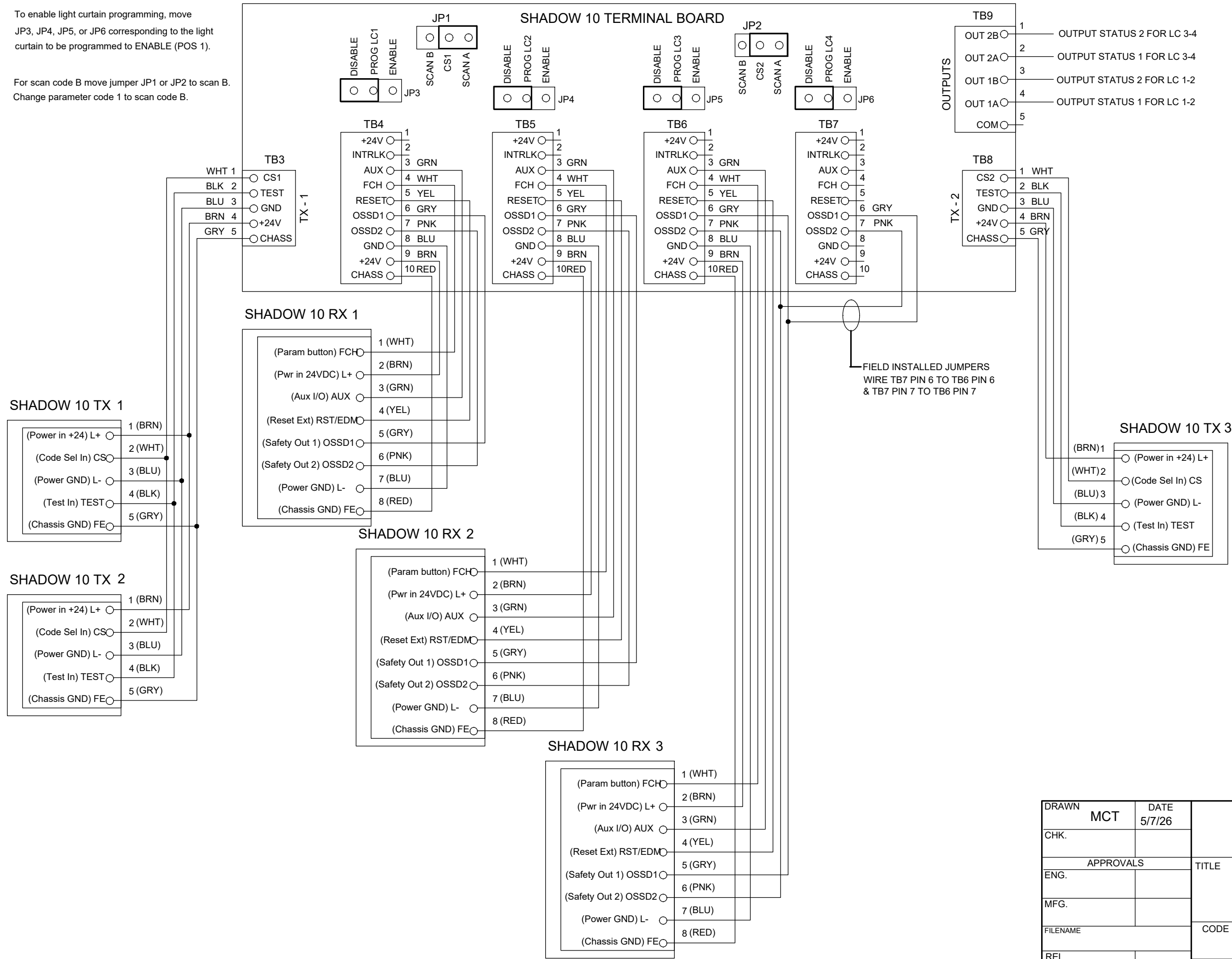


REVISIONS			
REV	DESCRIPTION	DATE	APP'D

To enable light curtain programming, move JP3, JP4, JP5, or JP6 corresponding to the light curtain to be programmed to ENABLE (POS 1).

For scan code B move jumper JP1 or JP2 to scan B. Change parameter code 1 to scan code B.



DRAWN	MCT	DATE	5/7/26	WINTRISS CONTROLS GROUP		
CHK.						
APPROVALS				TITLE SHADOW 10 CONTROL BOX WITH THREE SETS OF HEADS WIRING DIAGRAM		
ENG.						
MFG.				CODE IDENT NO.	SIZE	DRAWING NUMBER
REL					B	FIGURE 3
SCALE					SHEET	OF