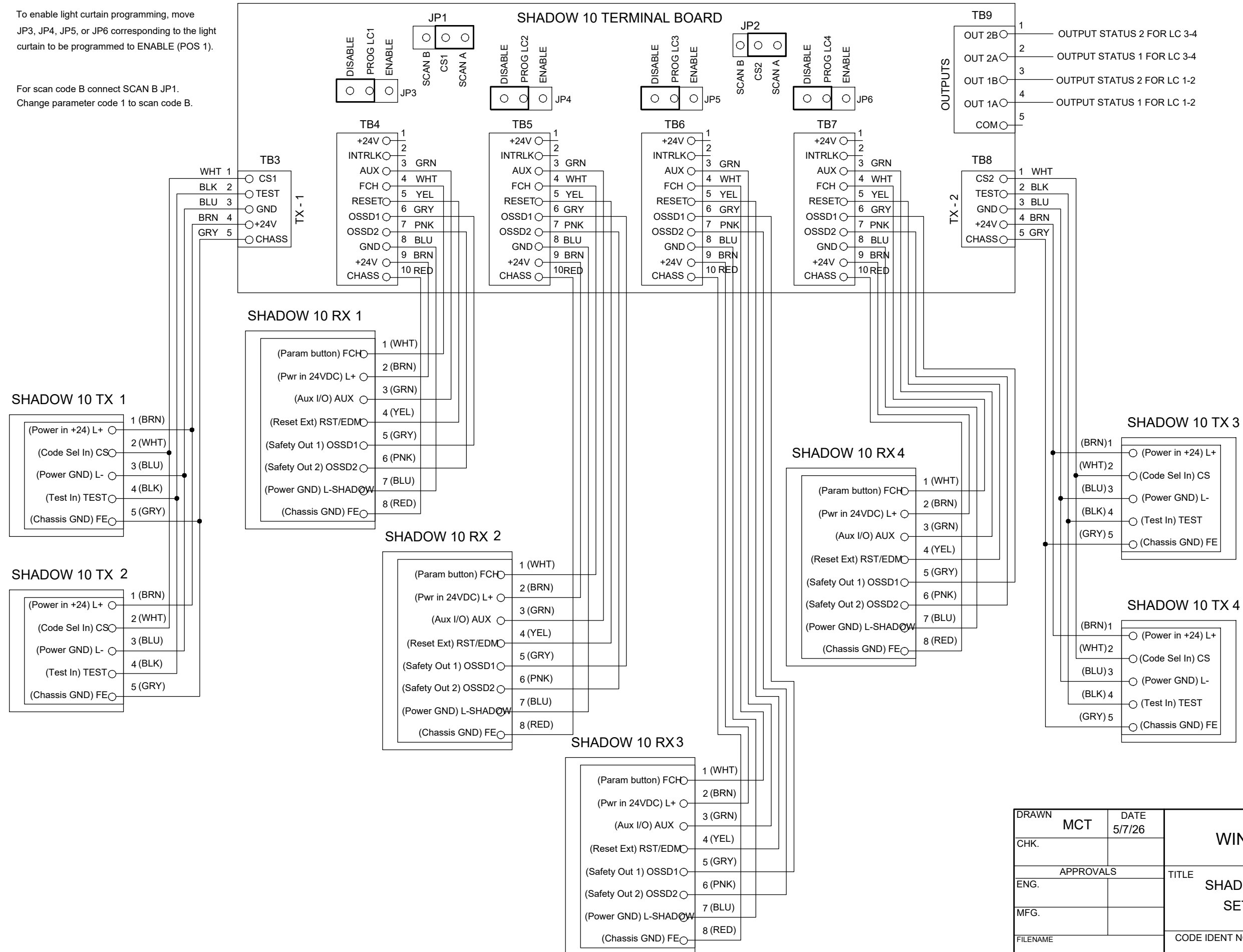


REVISIONS			
REV	DESCRIPTION	DATE	APP'D

To enable light curtain programming, move JP3, JP4, JP5, or JP6 corresponding to the light curtain to be programmed to ENABLE (POS 1).

For scan code B connect SCAN B JP1.
Change parameter code 1 to scan code B.



DRAWN	MCT	DATE	5/7/26	WINTRISS CONTROLS GROUP		
CHK.						
APPROVALS				TITLE SHADOW 10 CONTROL BOX WITH FOUR SETS OF HEADS WIRING DIAGRAM		
ENG.						
MFG.				CODE IDENT NO.	SIZE	DRAWING NUMBER
REL					B	FIGURE 4
SCALE				SHEET	OF	