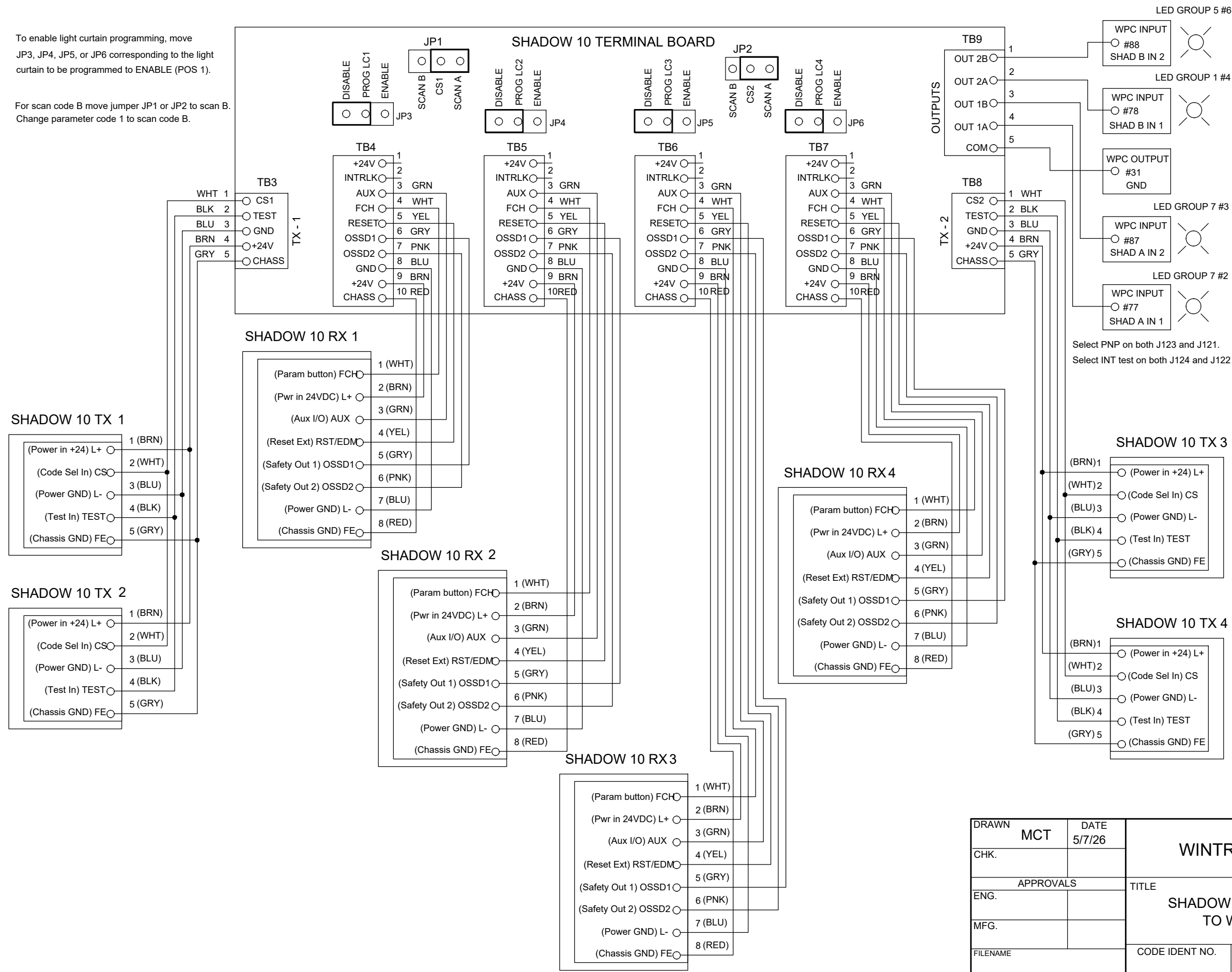


REVISIONS			
REV	DESCRIPTION	DATE	APP'D

To enable light curtain programming, move JP3, JP4, JP5, or JP6 corresponding to the light curtain to be programmed to ENABLE (POS 1).

For scan code B move jumper JP1 or JP2 to scan B. Change parameter code 1 to scan code B.



Select PNP on both J123 and J121.
Select INT test on both J124 and J122

DRAWN	MCT	DATE	5/7/26	WINTRISS CONTROLS GROUP		
CHK.						
APPROVALS				TITLE		
ENG.				SHADOW 10 CONTROL BOX FOUR HEADS TO WPC 2000 WIRING DIAGRAM		
MFG.				CODE IDENT NO.	SIZE	DRAWING NUMBER
REL					B	FIGURE 7
				SCALE		SHEET OF