

WINTRISS®



**Wintriss Press Control Solutions**  
Clutch/Brake/Motor Control Packages Built to Your Specifications

Safety ✓

Reliability ✓

Productivity ✓

Compliance ✓

# Wintriss Clutch/Brake & Motor Controls

*Every unit meets or exceeds all current regulations for control reliability, including OSHA 1910.217, ANSI B11.1-2009 and CSA Z142 and is third-party tested and certified to CSA 22.2-0.8 and 22.2-14.*

*Each WPC Clutch/Brake Control is an easy-to-use, dual-microprocessor-based system. With its two independent microprocessors, the WPC provides diverse redundancy for maintaining optimum clutch/brake control and operator safety.*

*Its resolver eliminates the need for a mechanical rotary limit switch and enables all timing adjustments to be made at the operator control panel.*

*To increase productivity, the digital readout displays key information such as press speed, stopping time and comprehensive diagnostics. And its crank-angle clock dynamically indicates the position of the crankshaft when the press is running or at rest (optional for WPC 1000).*

*Whether integrated with a motor control or purchased as standalone units, the WPC 1000 and WPC 2000 clutch/brake controls are your best choices for press safety, reliability and support.*

## Standard Features

### Interrupted Stroke Provision

When an interrupted stroke occurs, the WPC 1000/2000 automatically changes to “Two-hand-maintained Inch” mode, reverting to its original production mode once the press reaches the top of the stroke.

### Micro-Inch

Makes setup easier by enabling you to inch the slide for a predetermined amount of time whenever you press the palm buttons.

### Customized Status Codes

WPCs provide user-installed interlocks you can use to monitor press functions such as low lube level. Cross-checked interlocks are also provided for safety applications such as monitored door guards.

### Brake Monitor

The WPC’s electronic real-time brake monitor performs all standard brake monitor functions including the 90° stop-time test and a unique brake wear indicator.

### Self Diagnostics

When an error condition occurs, WPC displays a unique error code that identifies the problem area, enabling you to correct the problem more quickly and easily.

### Counter & Crank-Angle Clock

A six-digit presettable counter (Optional for WPC 1000)

## Available System Components for Press Retrofits

### Air Pressure Switches

Monitors both clutch and counter-balance air pressures.

### Operator Station

Operator stations are available with both side and top-mounted Run buttons. Both types are pre-wired for easy installation. An un-wired side-run operator station is also available for integrators.

### Dual-Monitored Safety Valve

Sizes are available for all press applications.

### Shadow® Light Curtains

Shadow light curtains provide a productive and effective point-of-operation guarding alternative. Protection zones are available from 6 to 60 inches high with a scanning range of up to 39 feet.

### One-Hand Control (Shadow Light Curtains required)

In addition to helping prevent operator fatigue and repetitive motion strain injuries, one-hand control significantly improves productivity when compared with a two-hand control.

### Foot Switch (Shadow Light Curtains required)

The foot switch can be a productive alternative to the two-hand control when used in conjunction with an effective guarding system. Productivity gains of as much as 50% are not uncommon.

Go to [www.wintriss.com](http://www.wintriss.com) for detailed comparison of all WPCs.



# WPC 1000 / CBMC 1000

## Cost Effective Solution for Hand-fed Applications

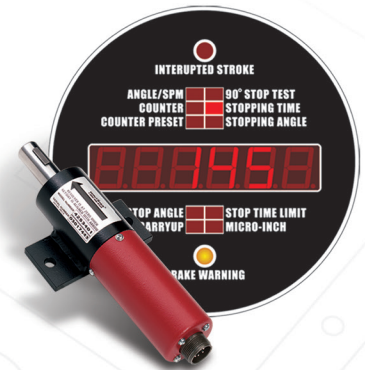
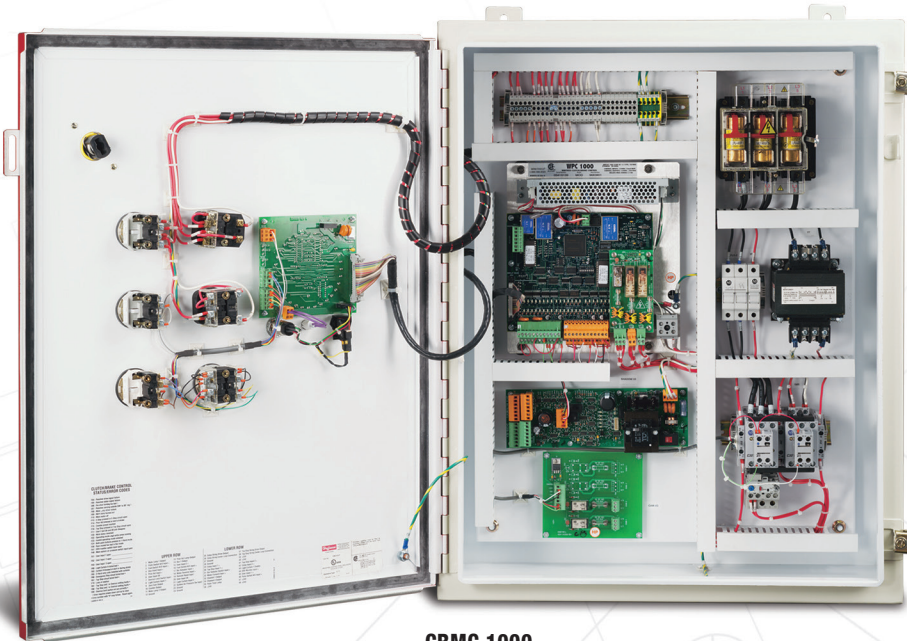
*WPC 1000 has all the Standard Features and is compatible with all Available System Components for Press Retrofits.*

*CBMC 1000 includes WPC 1000 and the necessary motor control components for a complete retrofit. You can upgrade older components and minimize downtime during installation.*

*The CBMC 1000 is available for up to 20 HP @460Vac. Any other configuration can be quoted on request.*

**Customized Status Codes**  
WPC 1000 provides 2 standard inputs and 1 more pair of cross-checked inputs.

**Optional Programmable Cams**  
WPC 1000 can be configured with a 2-channel programmable cam switch useful for controlling air blow-off, etc.



### Resolver and Display

The rugged resolver provides the real-time display of crank-shaft angle, speed, stopping time, etc.

### CBMC 1000

Includes WPC 1000 and all the necessary motor control components for a complete retrofit.



### WPC 1000

WPC 1000 can be configured to mount on left, right or front of a press.



### Operator Stations

Available with side or top mounted run buttons.



### Shadow Light Curtains

Add light curtains for personnel safety and one-hand or foot actuation.

# WPC 2000 / CBMC 2000

## Full Functionality Control Ready for Complete Automation

*WPC 2000 has all the Standard Features and is compatible with all Available System Components for Press Retrofits.*

*CBMC 2000 includes WPC 2000 and the necessary motor control components for a complete retrofit. You can upgrade older components and minimize downtime during installation.*

*The standard package is available for up to 20 HP @460Vac. Any other configuration can be quoted on request.*

*WPC 2000 is designed to handle any clutch/brake control application. It has the flexibility in operating modes and increased capacity for integration with devices commonly found in an automated application.*

### Customized Status Codes

WPC 2000 provides 7 standard inputs and 2 more pairs of cross-checked inputs. This will accommodate many different pieces of equipment and safety devices found in automatic press operations.

### Optional Productivity Enhancements for WPC 2000

#### Programmable Cams

WPC 2000 can be configured with a 4-channel programmable cam switch useful for controlling feed initiation, air blow-off, etc.

#### Continuous On-Demand (Automatic Continuous)

Continuous On-Demand enables you to automate a press by slaving it to another press or a parts-feeder. A properly timed signal from the other device keeps the press running in Continuous.

### Automatic Single-stroke

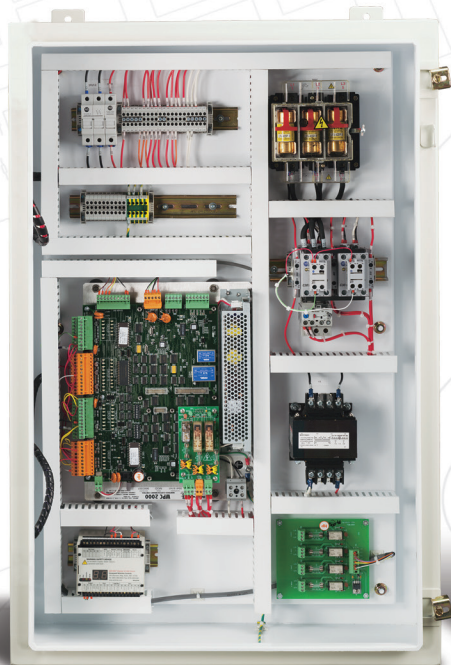
Automatic Single-stroke enables you to automate a manual press by slaving it to a feeding device or robot. A signal from the device initiates one press stroke at a time.

#### Option 1: Additional User Defined Inputs

The Option 1 board can be added to any WPC 2000 and provides 20 additional inputs (27 total) that can be programmed to monitor a variety of auxiliary equipment. There are 4 additional pairs of cross-checked inputs (total 6) that allow you to monitor functions critical to safety.

#### Auxiliary E-Stop Relay Outputs Option

Up to three auxiliary devices like a feed or a transfer can be stopped or prevented from starting if any E-stop button is depressed, any light curtain is interrupted or any cross-checked inputs (see "Customized Status Codes") are open.



### CBMC 2000

Includes WPC 2000 and all the necessary motor control components for a complete retrofit. CBMC 2000 can be configured to mount on left, right or front of a press.



### WPC 2000

WPC 2000 can be configured to mount on left, right or front of a press. Includes an LED crank-angle clock and six-digit presettable counter.



### WPC 2000 & SmartPAC PRO

WPC 2000 Integrated with SmartPAC PRO. Integrate all your press automation controls in one easy-to-use interface.



# WPC 2000 with SmartPAC PRO

WPC 2000 Integrated with SmartPAC PRO is a Powerful Combination of Safety & Press Automation

WPC 2000 integrated with SmartPAC PRO has all the Standard Features and is compatible with all Available System Components for Press Retrofits.

Wintriss SmartPAC PRO with its easy-to-use touch screen interface provides the flexibility and communications capabilities to integrate with most automation devices.

### SmartPAC PRO Features:

Unlimited Tool Memory  
Programmable Counters and Speed Limits  
Networkable: View Press Status Over the Internet, Send Text Messages, etc.

### SmartPAC PRO Options:

Info Center for Paperless Shop  
Up to 64-Sensor Inputs for Die Protection and In-Die Dimension Measurement  
Up to 16-Channel Programmable Cam Switch  
4-Input Waveform Analyzer  
2- or 4-Input Load Monitor  
Servofeed Interface (SFI)  
Auto Shut Height & Counterbalance Control  
Bilingual Status/Adjust Screens  
Preventive Maintenance Monitor  
Remote Data Collection

### Expanded Capabilities Option

#### Hydraulic Overload Control

Emergency-stops the press when an hydraulic overload occurs and provides the logic necessary to reset the system.

#### Speed Control for Variable Speed Presses

Precise speeds for each mode (Inch, Single-stroke & Continuous) are conveniently stored in the SmartPAC PRO's memory for each tool. Press speed changes automatically when you change the mode.

#### Lube Control

Monitors and controls up to 3 existing lube systems, using feedback from cycle switches. If there is a lube system malfunction, the press is top-stopped and a detailed fault message is displayed.

#### Flywheel Brake Control

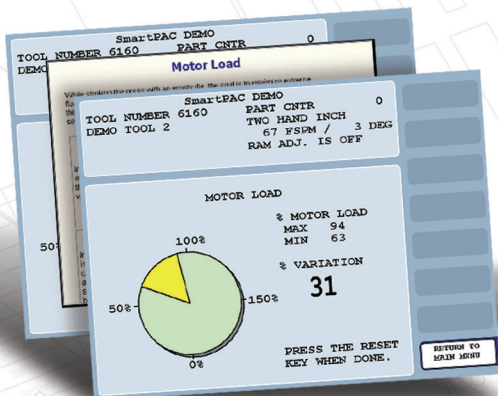
Ensures that the flywheel brake is released or engaged at the proper time.

#### Motor Current Readout

Manual counterbalance pressure adjustments. Optional current sensor is required.

#### Control Panel Options

- Forward and Reversing Starters
- Variable Speed Drives
- Fused Disconnects
- Control Transformer
- NEMA or IEC Components
- Integrated Servofeed Controls
- Integration of PLCs for Automation
- Select an Enclosure of Your Choice



### Expanded Capabilities

Additional capabilities are available including Hydraulic Overload Control, Lube Control and Motor Current Readout.

### Custom Consoles and Enclosures

Customize your automation and all the necessary motor control components in one console or enclosure for a complete retrofit. Add pendant or console to improve ease of use.

# Customizable

Wintriss Press Control Panels built to a customer's specifications.

## Clutch/Brake/Motor Control Consoles and Panels built to your specifications!

Wintriss Controls has a long history of building custom consoles or panels tailored to your pressroom needs. Whether it's a custom console or a standalone clutch/brake control, you still get the unsurpassed Wintriss product reliability and service.

If you are concerned about whether your press complies with current safety requirements, give us a call. Our technical staff or authorized representative will help you arrange an on-site press survey. Following our survey you will receive a detailed report on the status of each press. Call now to discuss your specific press control requirements: 1-800-586-TECH.

## The Wintriss Advantage:

- Combining press control functions in one enclosure saves space and eliminates clutter
- Saves installation time
- OSHA compliance for both motor control and clutch/brake control including electrical schematics
- Unsurpassed technical support

## Control Panel Options:

- Forward and reversing starters
- Variable speed drives
- Fused disconnects
- Control transformer
- NEMA or IEC components
- Integrated servofeed controls
- Integration of PLCs for automation
- Select an enclosure of your choice

## Unsurpassed Wintriss Services:

- Nationwide field service
- Overnight shipment for replacement parts
- Pressroom surveys
- Toll-free hot-line technical support: 1-800-586-8324



pendant



consolet



enclosure



cbmc 1000/2000



console

## Find Out More

For more information, contact your local Wintriss representative or visit our web site at [www.wintriss.com](http://www.wintriss.com).

Wintriss Controls is a leading manufacturer of press automation, die protection and safety controls for metal stamping and forming industries; and data collection systems for all discrete manufacturing. We provide seminars for all products and OSHA compliance along with plant surveys. These products, which leverage Wintriss' 50+ years of experience in the metal stamping industry, are known for their proven performance and rugged dependability in the toughest factory environments. Wintriss equipment is backed by attentive service, timely repairs, and comprehensive spares inventories. A toll-free hotline gives customers immediate access to technical support experts for product information and applications assistance.

## Wintriss Controls Group, LLC

100 Discovery Way, Unit 110  
Acton, Massachusetts 01720 USA

Toll Free: (800) 586-8324  
Web Site: [www.wintriss.com](http://www.wintriss.com)

0000000 November 2020  
© 2020 Wintriss Controls Group, LLC

**WINTRISS**<sup>®</sup>